

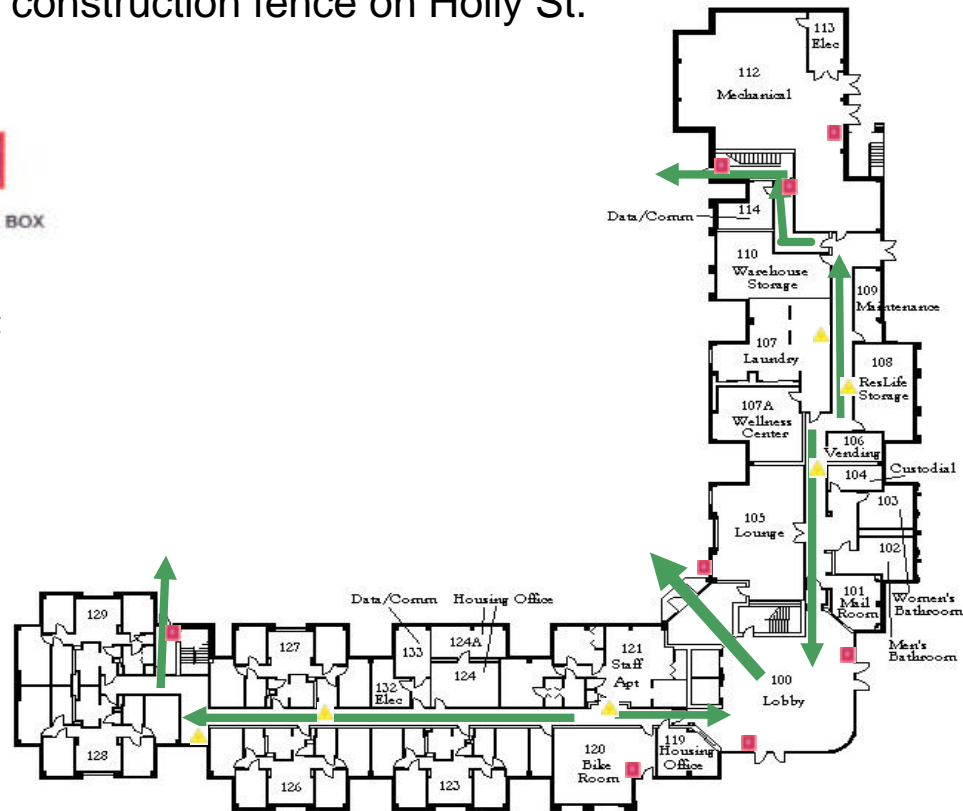
Graduate Living Center First Floor

Emergency Evacuation
Assembly Point is at the
construction fence on Holly St.



FIRE EXTINGUISHER FIRE PULL BOX

For emergency access
contact the duty staff pager at
404-533-7197 or the Campus
police at 404-894-2500.



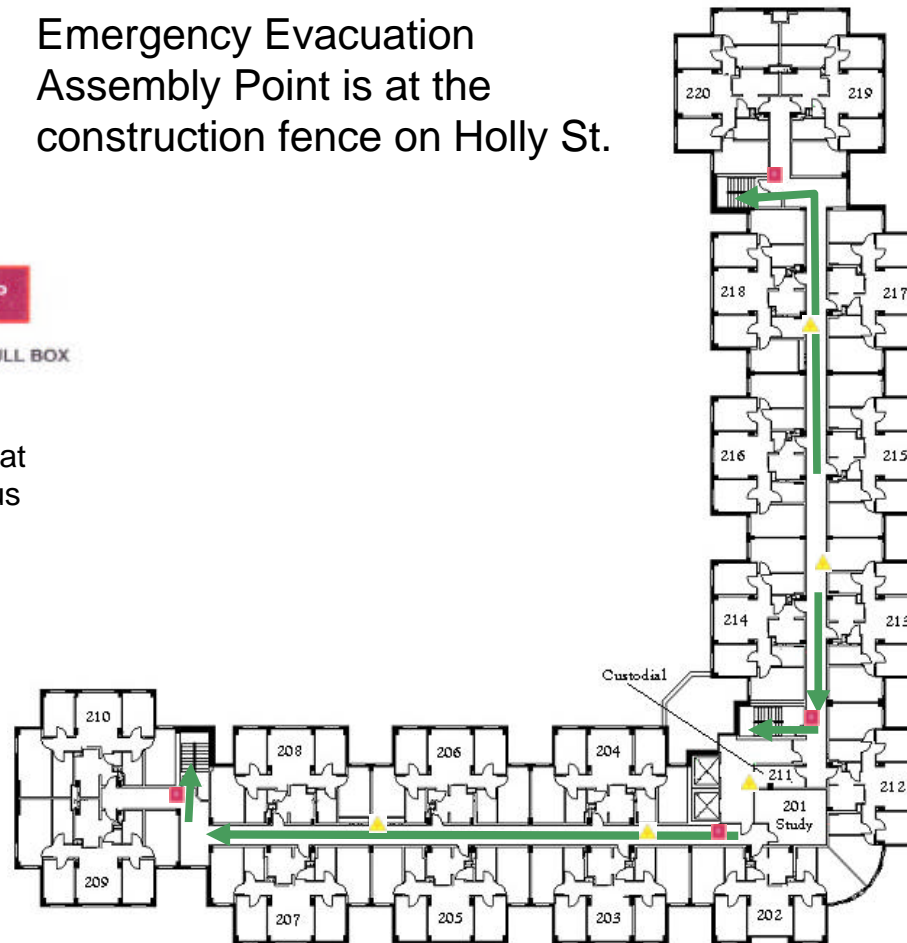
Graduate Living Center Second Floor

Emergency Evacuation
Assembly Point is at the
construction fence on Holly St.



FIRE EXTINGUISHER FIRE PULL BOX

For emergency access
contact the duty staff pager at
404-533-7197 or the Campus
police at 404-894-2500.

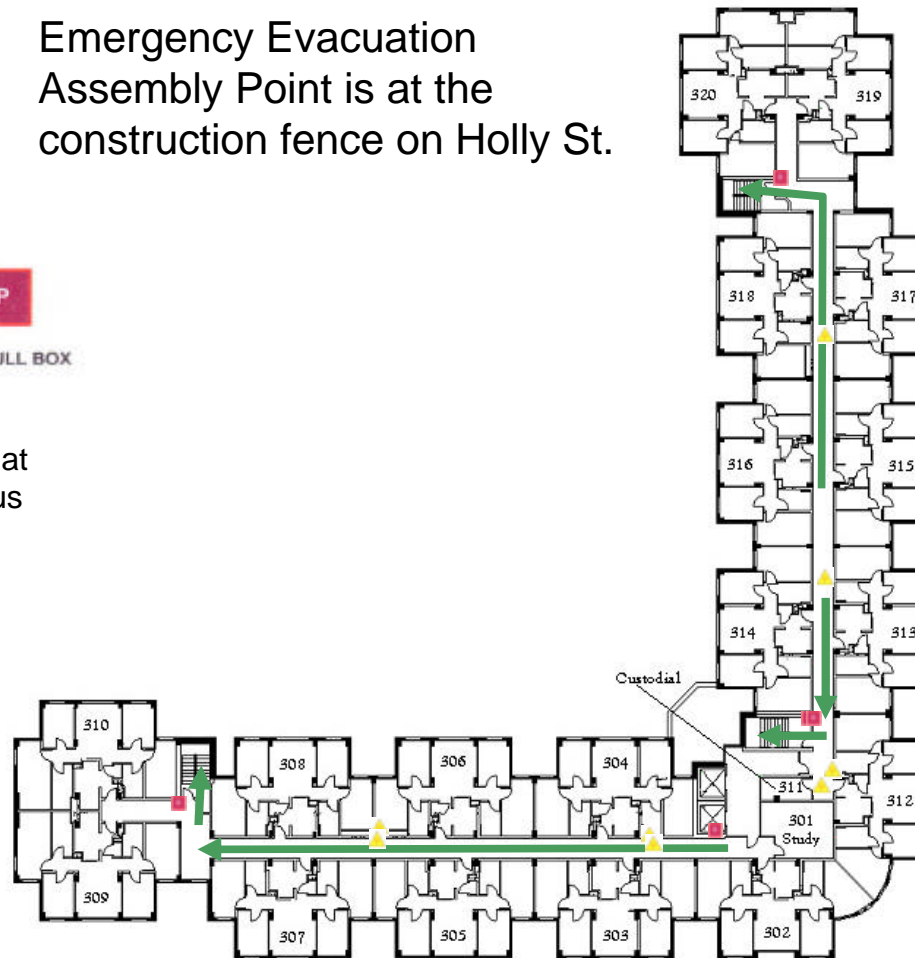


Graduate Living Center Third Floor

Emergency Evacuation
Assembly Point is at the
construction fence on Holly St.



For emergency access
contact the duty staff pager at
404-533-7197 or the Campus
police at 404-894-2500.

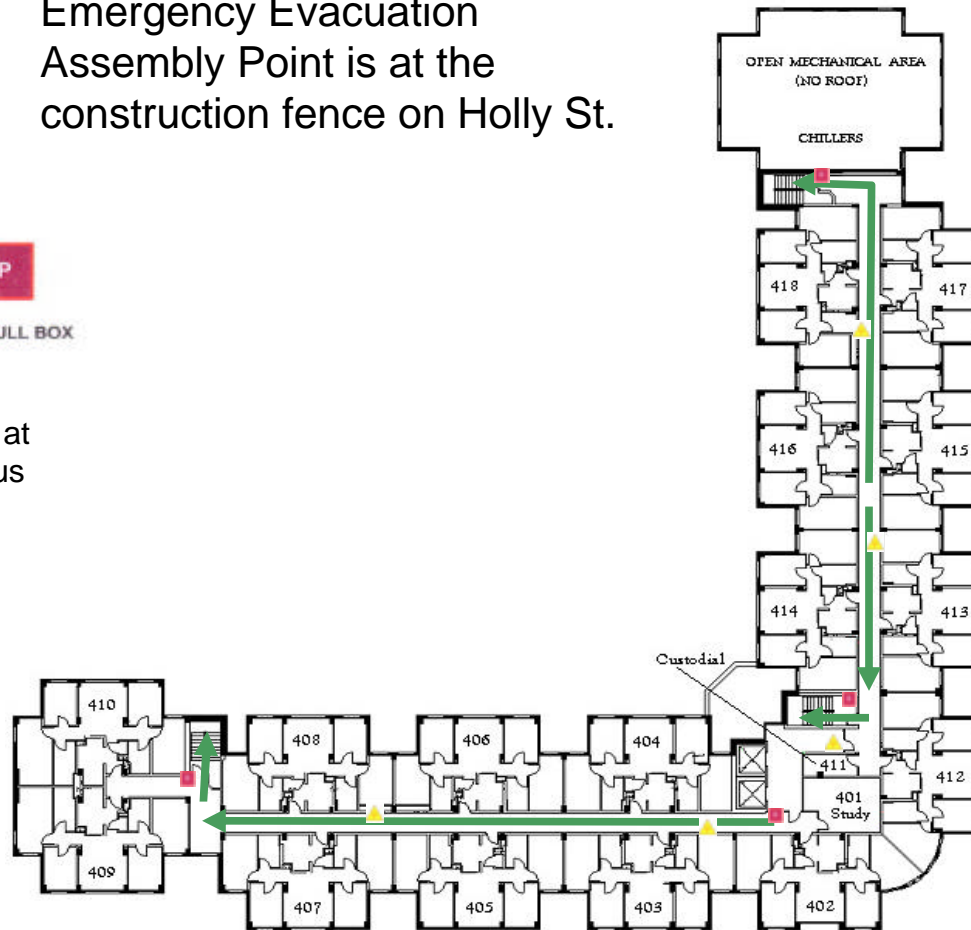


Graduate Living Center Fourth Floor

Emergency Evacuation
Assembly Point is at the
construction fence on Holly St.



For emergency access
contact the duty staff pager at
404-533-7197 or the Campus
police at 404-894-2500.

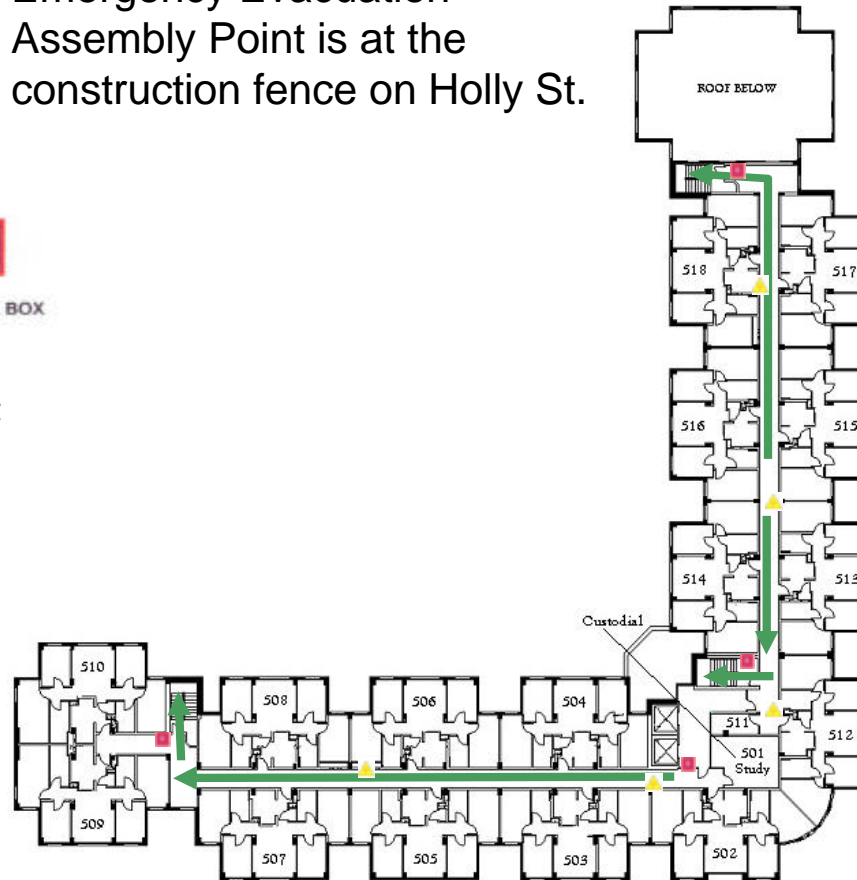


Graduate Living Center Fifth Floor

Emergency Evacuation
Assembly Point is at the
construction fence on Holly St.



For emergency access
contact the duty staff pager at
404-533-7197 or the Campus
police at 404-894-2500.



Graduate Living Center Sixth Floor

Emergency Evacuation
Assembly Point is at the
construction fence on Holly St.



For emergency access
contact the duty staff pager at
404-533-7197 or the Campus
police at 404-894-2500.

